

Development and Validation of LC-MS/MS Methods for the Quantitation of Commonly Co-administered Drugs and in Support of Several Clinical Studies

Ashley Davie, Chad Christianson, Emily Witthuhn, Ryan Schmich, Katherine Yahvah, and Jennifer Zimmer
Alturas Analytics, Inc., 1324 Alturas Drive, Moscow, ID 83843



Advancing Pharmaceutical Sciences,
Careers, and Community

CONTACT INFORMATION: Ann Hoffman, ahoffman@alturasanalytics.com
Lori Payne, lpayne@alturasanalytics.com

PURPOSE

The 2018 FDA Guidance for the Validation of Bioanalytical Methods requires an assessment of the impact of the presence of co-administered drugs on the analytical measurement and stability of novel drug candidates. GLP-compliant methods were developed and validated in support of a clinical study that featured co-administration of itraconazole, paroxetine, cimetidine, moxifloxacin, and valproic acid with a proprietary drug candidate. Various methods involving protein-precipitation and liquid-liquid extraction were employed utilizing direct-analysis or dilution of supernatant as well as evaporation with nitrogen followed by reconstitution of analyte in organic solvent.

RESULT(S)

- Accuracies and precision better than $\pm 15\%$ ($\pm 20\%$ at LLOQ).
- Demonstrated selectivity and stability in the presence of co-administered drug.

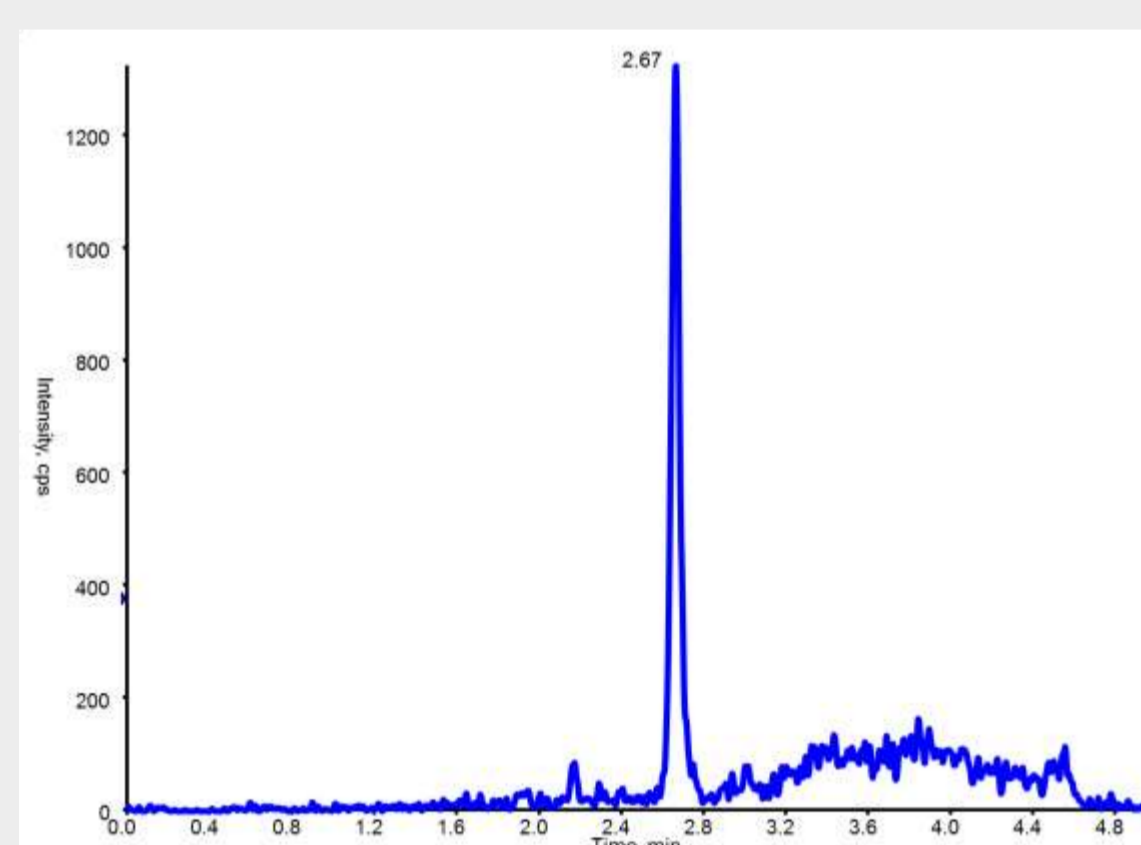


Figure 1: Itraconazole

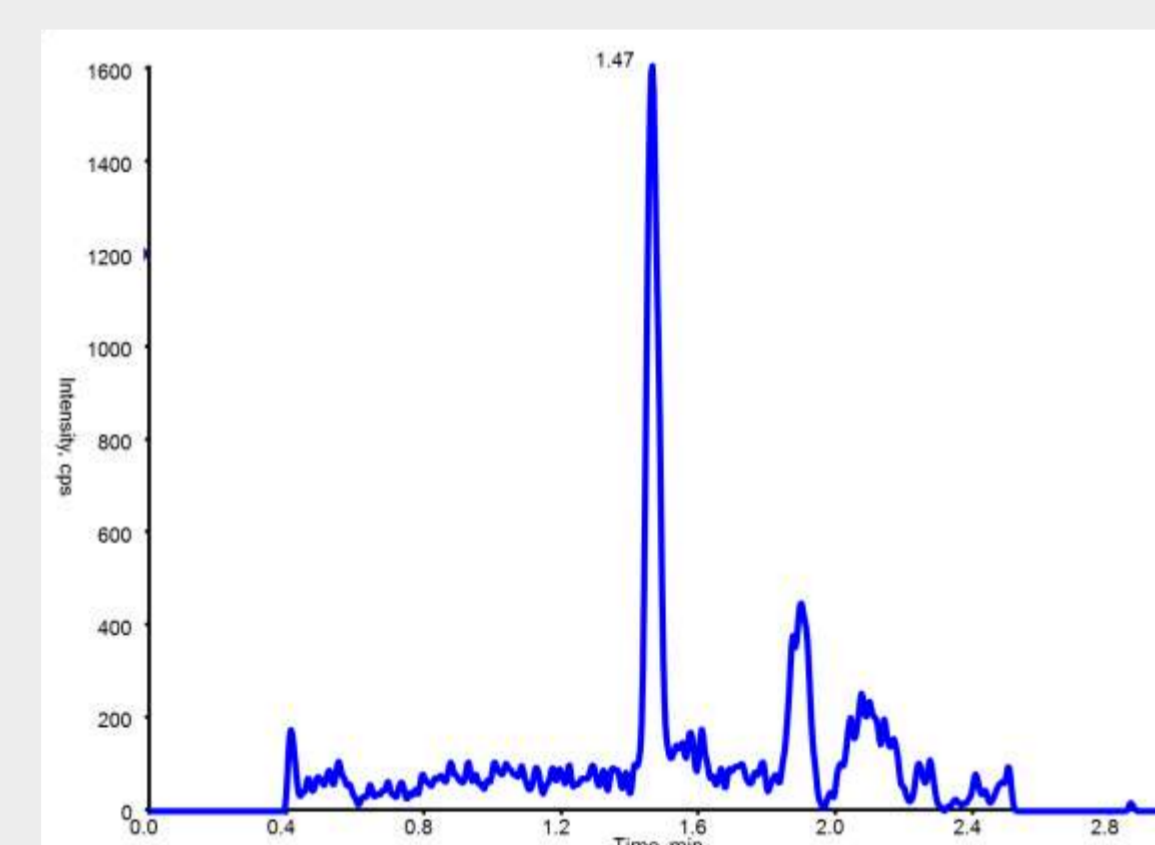


Figure 2: Paroxetine

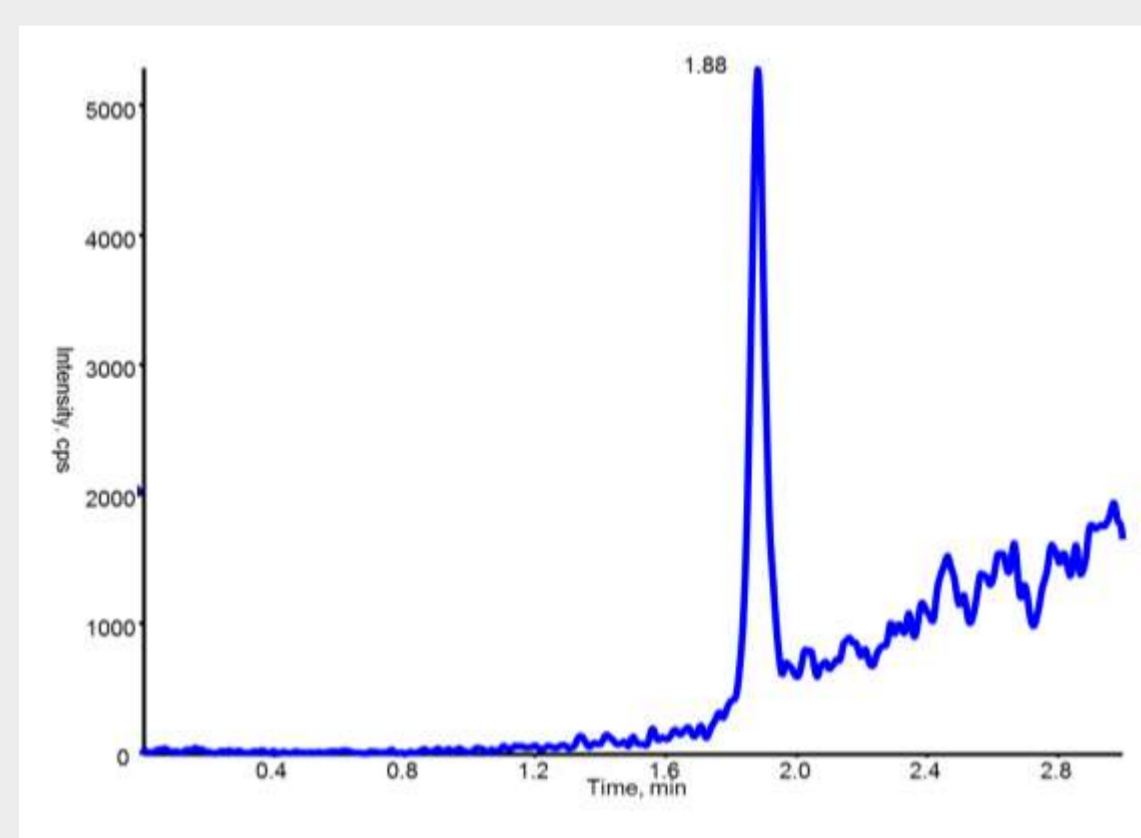


Figure 3: Cimetidine

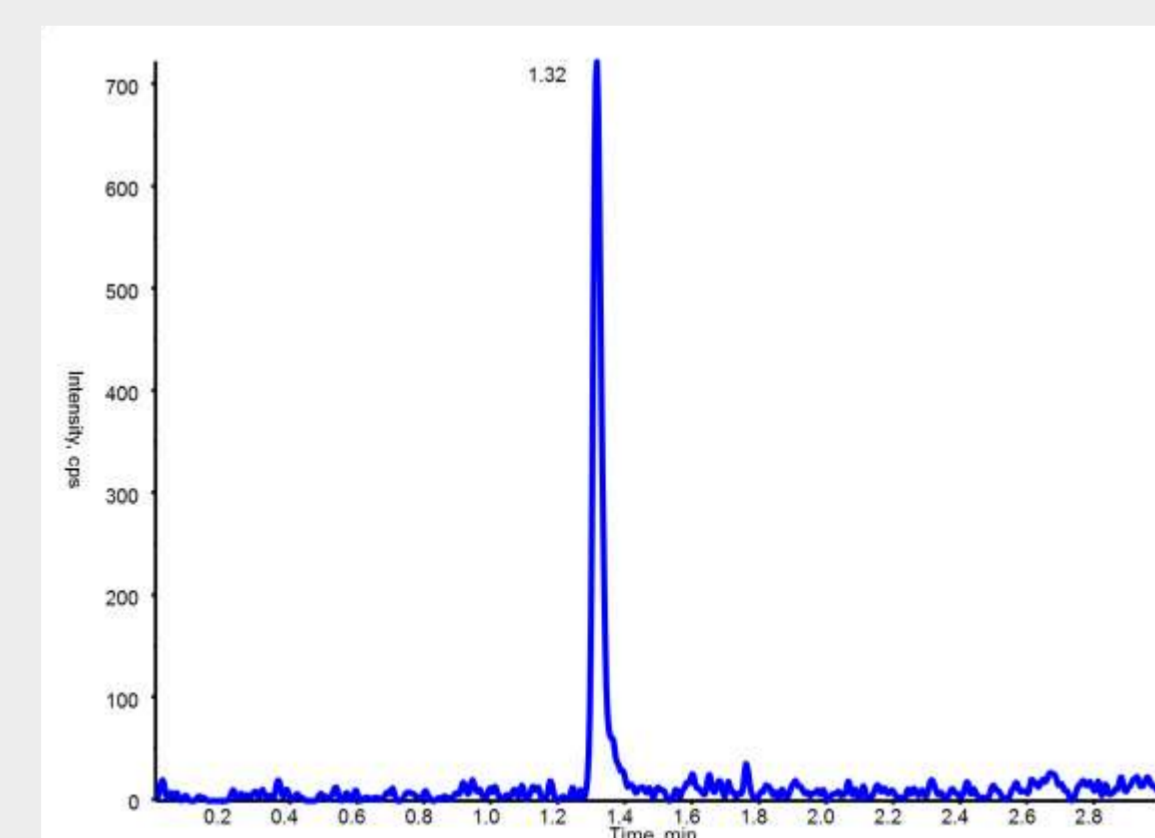


Figure 4: Moxifloxacin

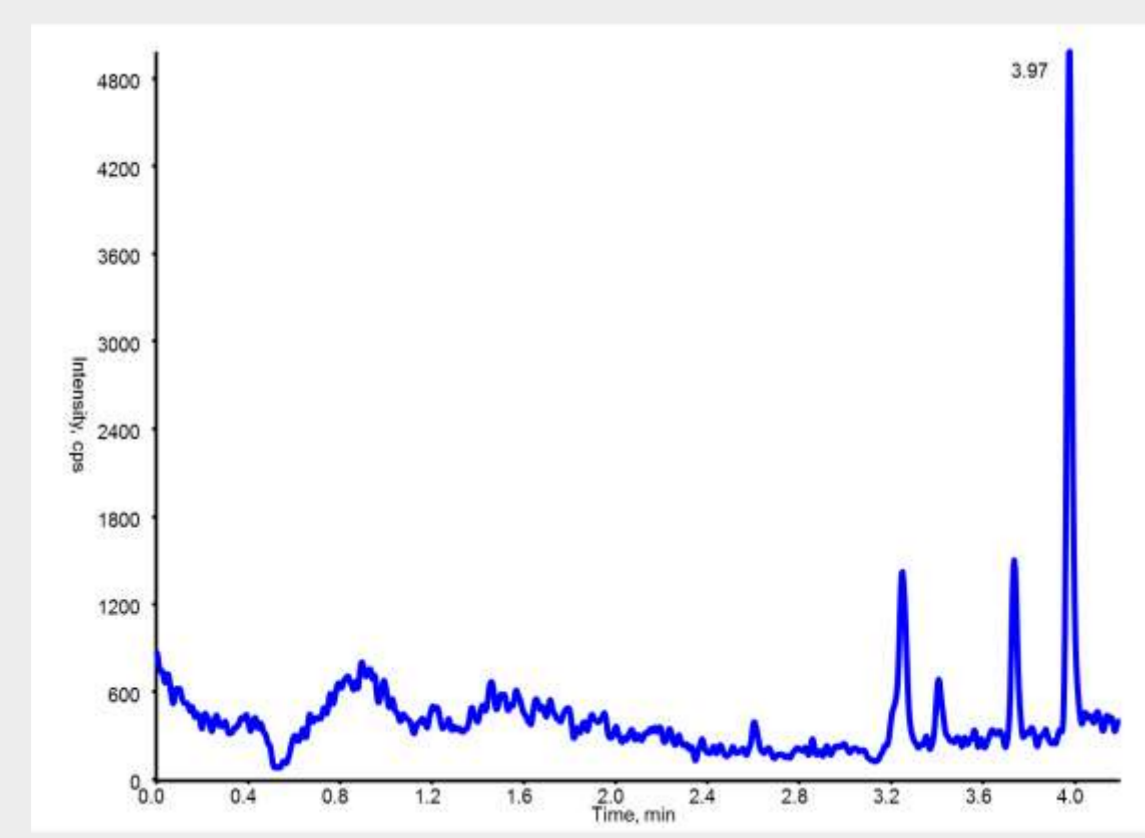


Figure 5: Valproic Acid

METHOD(S)

Itraconazole:

Extraction

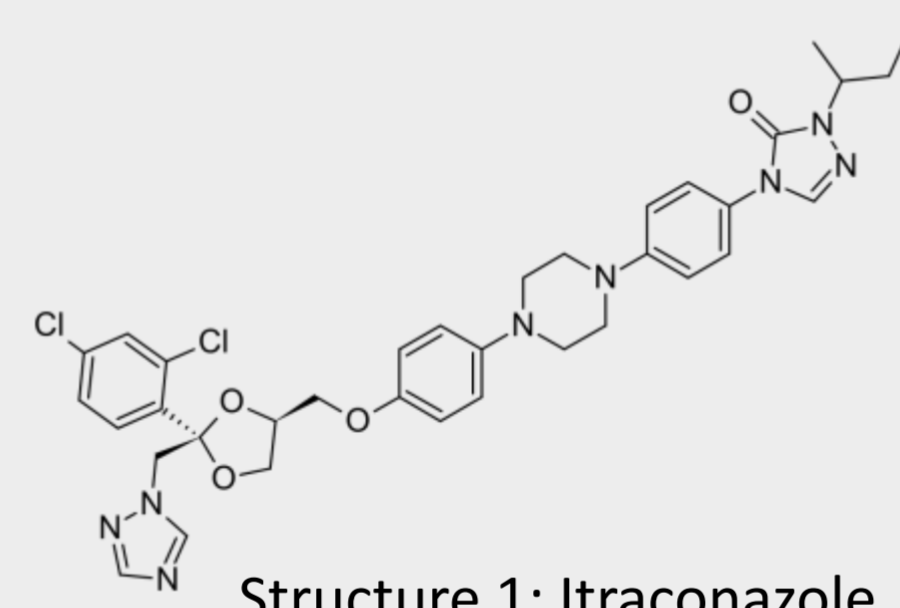
- Samples extracted with 8:2 ACN:H₂O followed by direct injection of 100 μ L supernatant
- Dynamic range: 2.00 – 800 ng/mL

HPLC Parameters

- MPA: H₂O + 0.1% formic acid
- MPB: ACN + 0.1% formic acid
- Flow rate: 0.7 mL/min
- Agilent Pursuit 5 Diphenyl Column

Mass Spectrometry

- Sciex QTRAP[®] 5500 or 6500
- ESI in positive ion mode
- MRM Transitions:
 - Itraconazole: 705.7 \rightarrow 392.3
 - Ketoconazole-D₈: 539.1 \rightarrow 82.3



Paroxetine:

Extraction

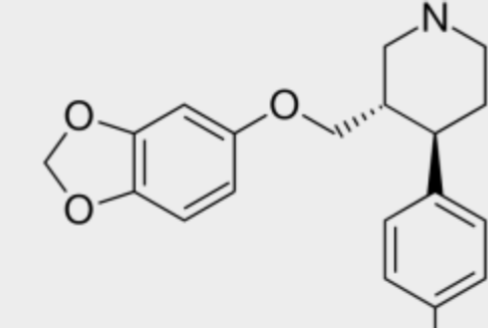
- Acetonitrile precipitation
- Supernatant evaporated under nitrogen at 40°C and reconstituted in 6:4 H₂O:ACN
- Dynamic range: 0.0500 – 50.0 ng/mL

HPLC Parameters

- MPA: H₂O + 0.1% formic acid
- MPB: ACN + 0.1% formic acid
- Flow rate: 0.7 mL/min
- Millipore Sigma
- Discovery[®] HS C18 Column

Mass Spectrometry

- Sciex QTRAP[®] 5500 or 6500
- ESI in positive ion mode
- MRM Transitions:
 - Paroxetine: 330.6 \rightarrow 192.1
 - Paroxetine-D₆: 335.4 \rightarrow 197.2



Cimetidine:

Extraction

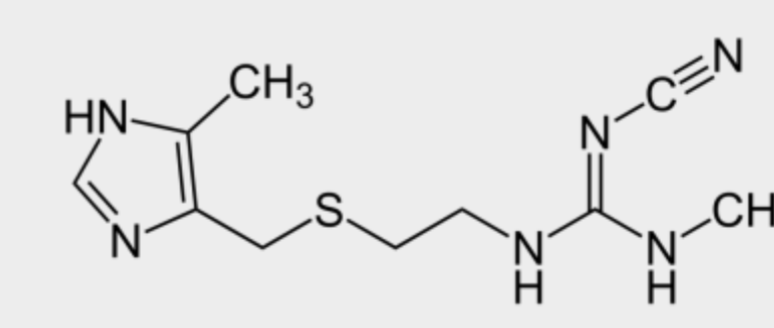
- Samples extracted via liquid-liquid extraction with ethyl acetate
- Supernatant evaporated under nitrogen at 40°C and reconstituted in 1:1 H₂O:MeOH
- Dynamic range: 5.00 – 1000 ng/mL

HPLC Parameters

- MPA: 1 mM Ammonium Acetate
- MPB: Methanol
- Flow rate: 0.7 mL/min
- Synergi[™] Polar-RP Column

Mass Spectrometry

- Sciex API 4000 operating in MRM mode
- ESI in positive ion mode
- MRM Transitions:
 - Cimetidine: 253.0 \rightarrow 159.1
 - Cimetidine-D₃: 256.5 \rightarrow 162.1



Moxifloxacin:

Extraction

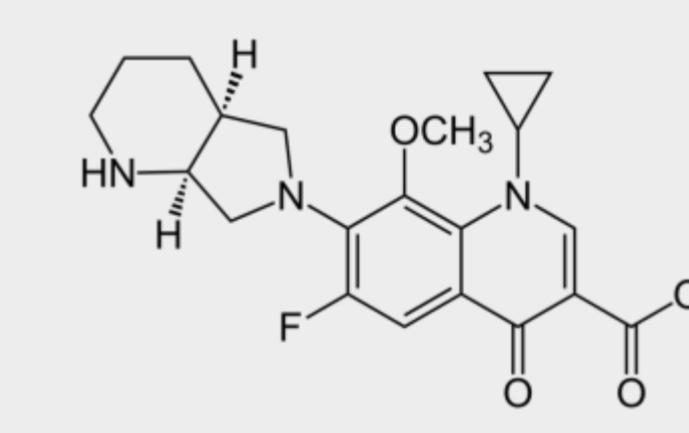
- Acetonitrile precipitation, followed by dilution in H₂O
- Dynamic range: 25.0-25000 ng/mL

HPLC Parameters

- MPA: H₂O + 1% formic Acid
- MPB: ACN + 1% Formic Acid
- Flow Rate: 0.7 mL/min
- Discovery[®] HS C18 Column

Mass Spectrometry

- Sciex API 4000 operating in MRM mode
- ESI in positive ion mode
- MRM Transitions:
 - Moxifloxacin: 402.2 \rightarrow 261.2
 - Moxifloxacin-¹³C,₃: 256.5 \rightarrow 162.1



Valproic Acid:

Extraction

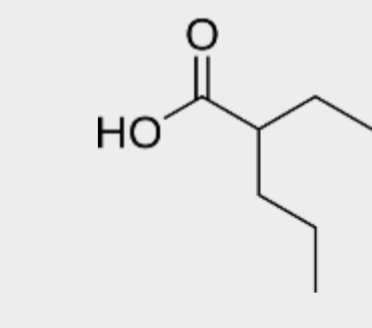
- Methanol (MeOH) precipitation, followed by a dilution in H₂O + 0.1% Formic Acid
- Dynamic Range: 3.00-150 μ g/mL

HPLC Parameters

- MPA: 10 mM Ammonium Formate (aq)
- MPB: MeOH
- Flow rate: 0.5 mL/min
- Phenomenex Luna[®] C8 Column

Mass Spectrometry

- Sciex QTRAP[®] 5500
- ESI in negative ion mode
- MRM Transitions:
 - Valproic Acid: 143.0 Single Ion Monitoring (SIM)
 - Valproic Acid-d₆: 149.0 SIM



Methodology	HPLC-MS/MS				
Analyte	Itraconazole	Paroxetine	Cimetidine	Moxifloxacin	Valproic Acid
Matrix	Human Plasma				
Internal Standard (IS)	Ketoconazole-D ₈	Paroxetine-D ₆	Cimetidine-D ₃	Moxifloxacin- ¹³ C, ₃	Valproic Acid-D ₆
Extraction Method	Acetonitrile Precipitation		Liquid-Liquid Extraction with Ethyl Acetate	Acetonitrile Precipitation	Methanol Precipitation
Validated Range	2.00-800 ng/mL	0.0500-50.0 ng/mL	5.00-1000 ng/mL	25.0-25000 ng/mL	3.00-150 μ g/mL
Calibration Model	Linear 1/x ² Regression				
Precision (% CV)					
Intrabatch	0.9% to 6.3%	1.2% to 12.2%	2.3% to 7.0%	3.2% to 9.3%	2.1% to 5.6%
Interbatch	4.4% to 9.8%	1.7% to 16.8%	3.0% to 9.1%	3.5% to 8.6%	2.2% to 7.2%
Accuracy (% Bias)					
Intrabatch	-12.0% to 3.3%	-8.2% to -4.7%	-3.2% to 12.0%	-6.0% to -1.1%	-6.0% to -1.3%
Interbatch	-12.0% to -6.7%	-7.2% to 1.3%	0.0% to 12.0%	-7.6% to -1.6%	-5.0% to 3.0%
Analyte Recovery	54.5% to 57.7%	67.1% to 68.7%	48.7% to 52.2%	76.1% to 82.7%	102% to 106%
Benchtop Stability	Up to 6 hours				
Freeze-Thaw Cycles	Up to 4 cycles				
Processed Sample Stability	Demonstrated 24 hours re-injection stability of processed sample extracts			Greater than 29 hours	Greater than 31 hours
Long Term Stability	93 days at -70°C	28 days at -70°C	134 days at -70°C	94 days at -70°C	103 days at -70°C

Table 1: Validation Summary

CONCLUSION(S)

- Methods were developed and validated for simultaneous analysis of proprietary drug candidates with itraconazole, paroxetine, cimetidine, moxifloxacin, and valproic acid by HPLC-MS/MS.
- Methods are robust, simple, selective, and rapid with a run time of 6.2 - 6.8 minutes.
- Validated stability and selectivity for analysis of a novel drug candidate in the presence of the co-administered drugs in compliance with the 2018 FDA Guidance for the Validation of Bioanalytical Methods.
- Successfully applied to analyze clinical pharmacokinetic study samples:
 - 5084 plasma samples analyzed across five analytes
 - 93% batch passing rate
 - Performed within a 1 month turnaround after receipt of final shipment
 - Demonstrated reproducibility upon incurred sample repeat (ISR) analysis